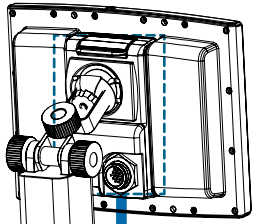
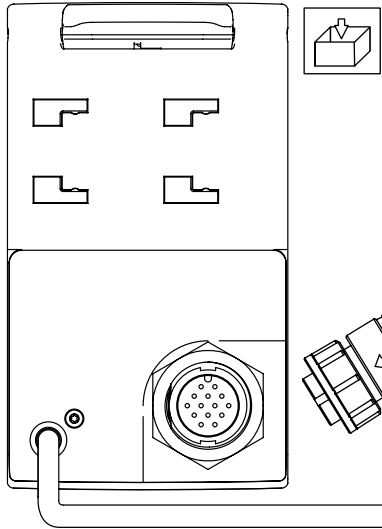


WiFi & BT(A2DP speakers required)  
Only G7 Plus Farmnavigator



BRACKET

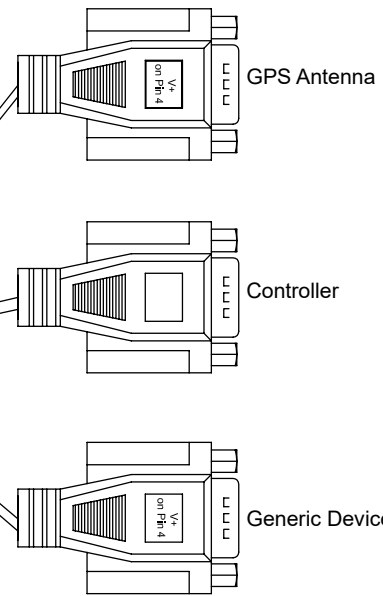
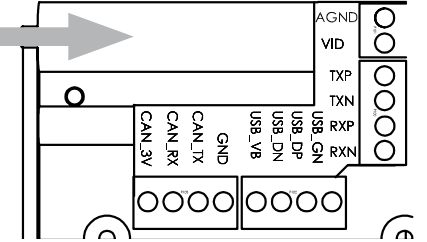


14 wires cable



	Analog (Video) GND		AGND
	Video input		VID
	USBHost Voltage 5V		USB_VB
	USBHost GND		USB_GN
	USBHost Data_DP		USB_DP
	USBHost Data_DN		USB_DN
	Can Bus Power 3V		CAN_3V
	Can Bus GND		GND
	Can Bus TX		CAN_TX
	Can Bus RX		CAN_RX
	Ethernet_TXN		TXN
	Ethernet_TXP		TXP
	Ethernet_RXN		RXN
	Ethernet_RXP		RXP

CONNECTION BOX

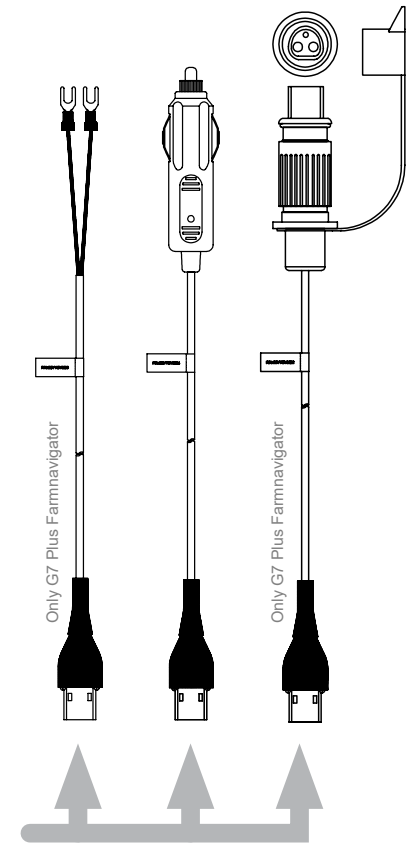


GPS Antenna

Controller

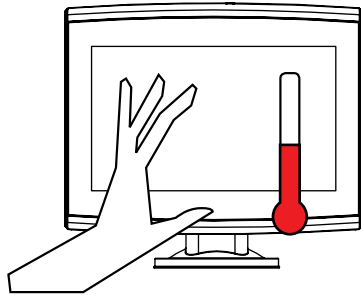
Generic Device

10 - 35 Vdc  
External Power

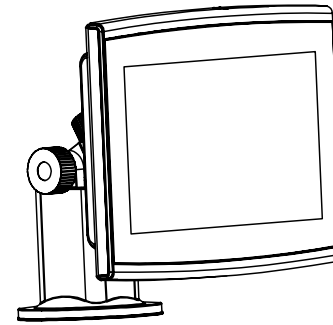
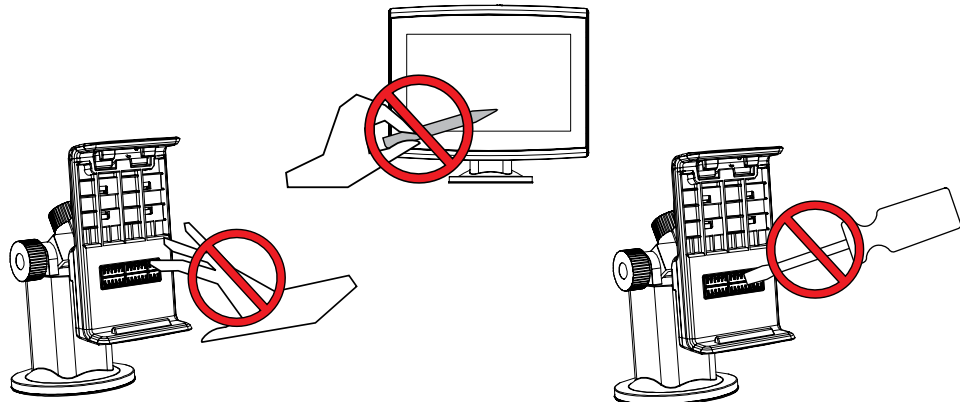
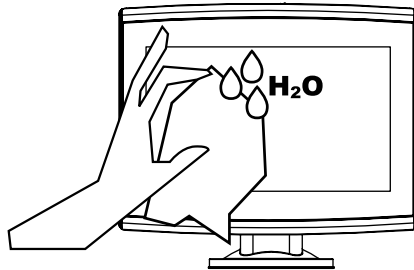
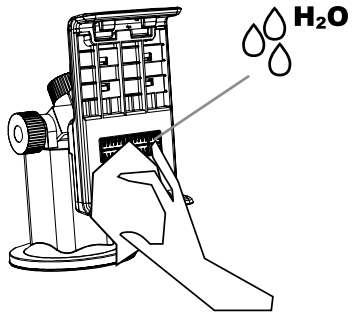


Included      Not included

Images are for illustrative purposes only and can differ from the real product.

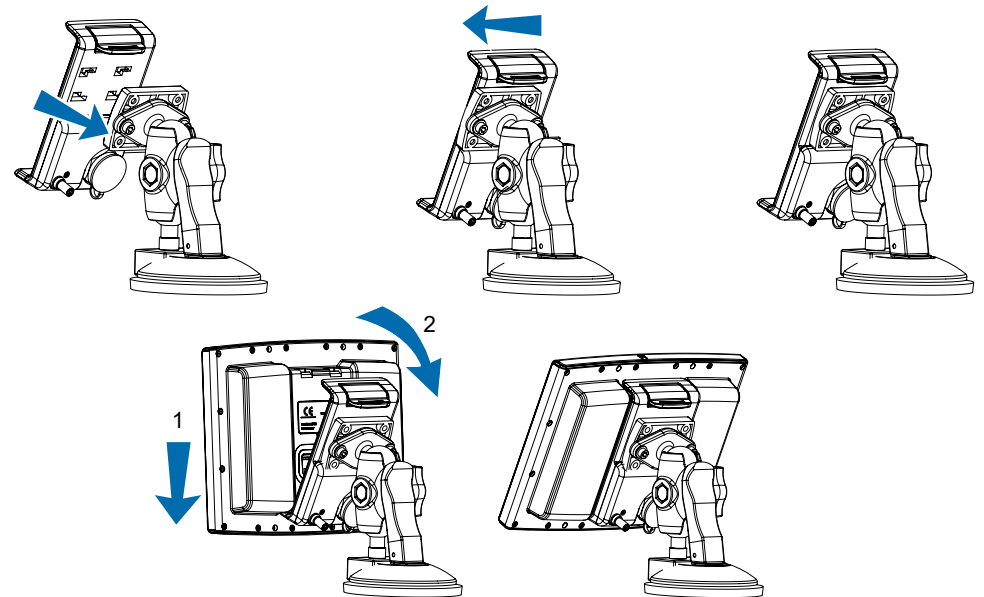


-10° / + 60° C



# Connections and Warnings G7 Farmnavigator

Microprocessor	Dual Core 1GHz
NAND	4 GB
RAM	DDR3 533MHz 64 bit , 512MBytes
Graphic	3D GPU + 2D GPU
LCD	7" WSGA 1024x600, 1000 nits, 24 bit color, wide viewing angle
Internal GPS	50 Channels, WAAS/EGNOS/MSAS/GAGAN
Cartridge slot	#1 MicroSD slot
Supply Voltage	10+35 Vdc
Consumption	1,5A MAX @ 12V (~18 W)
WLAN*	Wi-Fi 802.11 b/g/n, single-band
BT*	4.1 - compatible with A2DP profile



\* Only G7 Plus Farmnavigator